



The Complicated Case of Open and Automatic Corpus-use – Prosodic Clashes of Music and Language

DHN2018

Heini Arjava, MA, University of Helsinki

Mar 9, 2018



Key Concepts

Music

Language

Prosody

Clash

Clashes in segment length



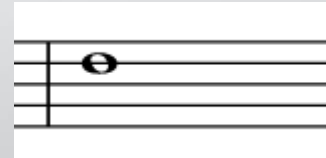
ta -



ta - -



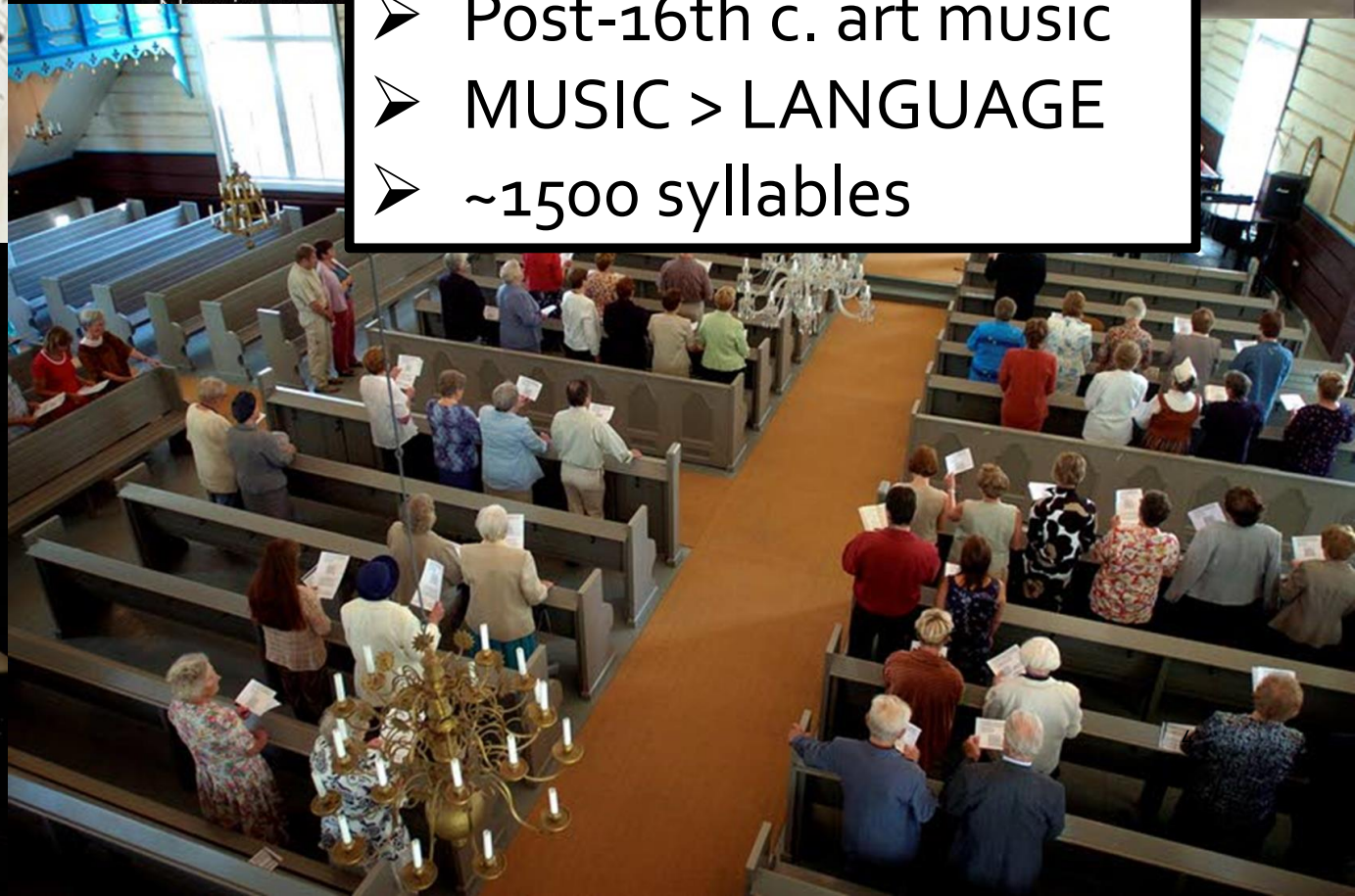
ta - - - -



ta - - - - - ...



- FI < EN, SWE, FR, IT...
- Post-16th c. art music
- MUSIC > LANGUAGE
- ~1500 syllables



Strophe 1:
 Silbenzerlegung:
 (Fried|lich) (be|käm|pfen)
 (Nacht) (sich) (und) (Tag) .
 (Wie) (das) (zu) (däm|pfen) ,
 (Wie) (das) (zu) (lö|sen) (ver|mag) !
 Metrik:
 Silben=5, Betonung="++--"
 Silben=4, Betonung="++--"
 Silben=5, Betonung="++--"
 Silben=7, Betonung="++--++"
 Reim:
 Endreim="abab" (Kreuzreim)
 Klassifikation nach Frank:
 unbekannt
 Klassifikation nach Schlawe:
 4.73

Strophe 2:
 Silbenzerlegung:
 (Der) (mich) (be|drück|te) ,
 (Schläfst) (du) (schon) , (Schmerz) ?
 (Was) (mich) (beglück|te) ,
 (Sa|ge) , (was) (wars) (doch) , (mein) (Herz) ?
 Metrik:
 Silben=5, Betonung="++--"
 Silben=4, Betonung="++--"
 Silben=5, Betonung="++--"
 Silben=7, Betonung="++--++"
 Reim:
 Endreim="abab" (Kreuzreim)

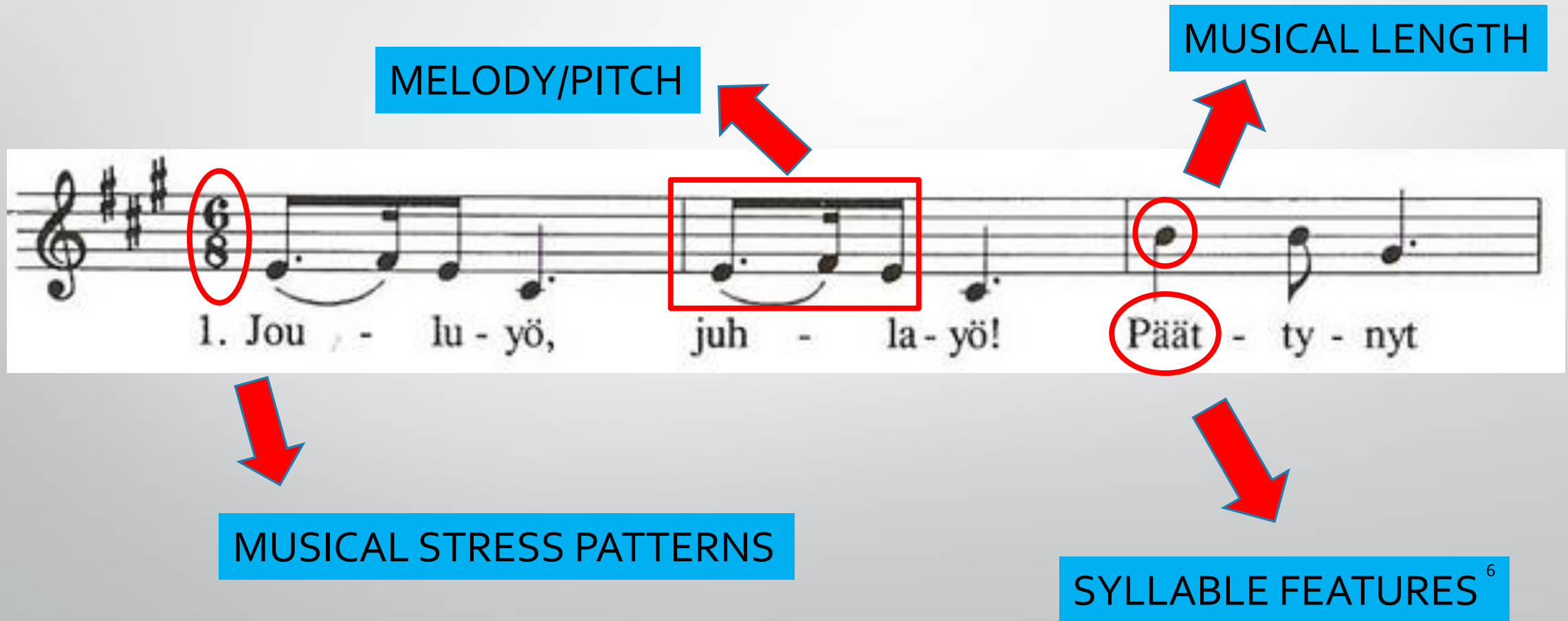
	Syl1	Syl 2	Syl 3	Syl 4	Syl 5	Syl 6	Syl 7	Syl 8	Syl 9	Syl 10	Syl 11
SIV1	Was	glänzt	dort	vom	Wal	de	im	Son	nen	schein?	
	0	+++	0	0	x	-	0	x+++	-	++	
SIV2	Hör's	nä	her	und	nä	her	brau	sen.			
	+	x+	-	-	x+	-	x++	-			
SIV3	Es	zieht	sich	her	un	ter	in	düs	te	ren	Reihn,
	0	++	0	x	+	-	0	x+	0	-	+++++
SIV4	Und	gel	len	de	Hör	ner	schal	len	dar	ein	
	0	x+	-	-	x+	-	x+	-	x	+	
SIV5	Und	er	fül	len	die	See	le	mit	Grau	sen.	
	0	x	++++	-	-	x++	-	0	x++	-	
SIV6	Und	wenn	ihr	die	schwarzen	Ge	sel	len	fragt:		
	0	++	0	-	x+	-	x	++	-	+++	
SIV7	Das	ist	Lüt	zows	wil	de,	ver	we	ge	ne	Jagd. ⁵
	0	0	x+	0	x	-	x	++	0	0	++++

Bobنهاusen, Klemens. 2011. The Metricalizer – Automated Metrical Markup of German Poetry. In: Küper, C. (ed.), *Current trends in metrical analysis*, pp. 119-131. Frankfurt am Main; New York: Peter Lang.

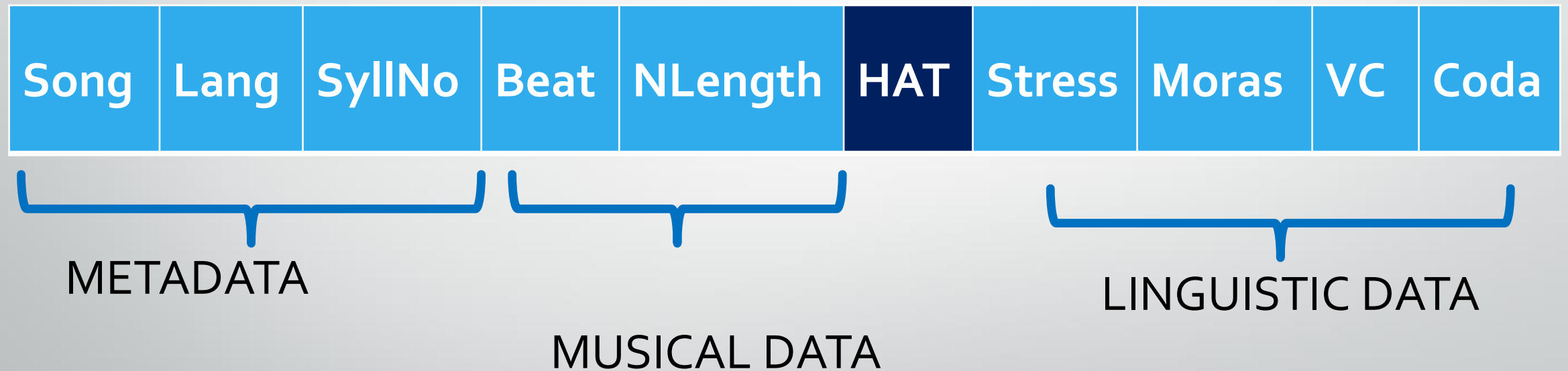
Automated metrical analysis

➤ Musical rhythm is less predictable and not analysable from text alone

Automatization? Many layers of information to retrieve



Manual annotations for R analysis





Separate automatic analyses?

- Automatic speech analysis?
- Text parsing for syllable features?
- Melody extraction?
- Music score analysis?



Open science with music research?

LYRICS? REPRODUCIBILITY? SHARING?

COMPOSITION?

PERFORMANCE?

NOTATION (PUBLISHERS)?



Conclusions

- Many layers of information in different medias
 - How to increase the size of a song corpus?
- No easily accessible corpora comparable to those of written or spoken language
- What can be taken and shared?
 - Music linguistic study of songs is complicated



Thank you!

Contact: heini.arjava@helsinki.fi